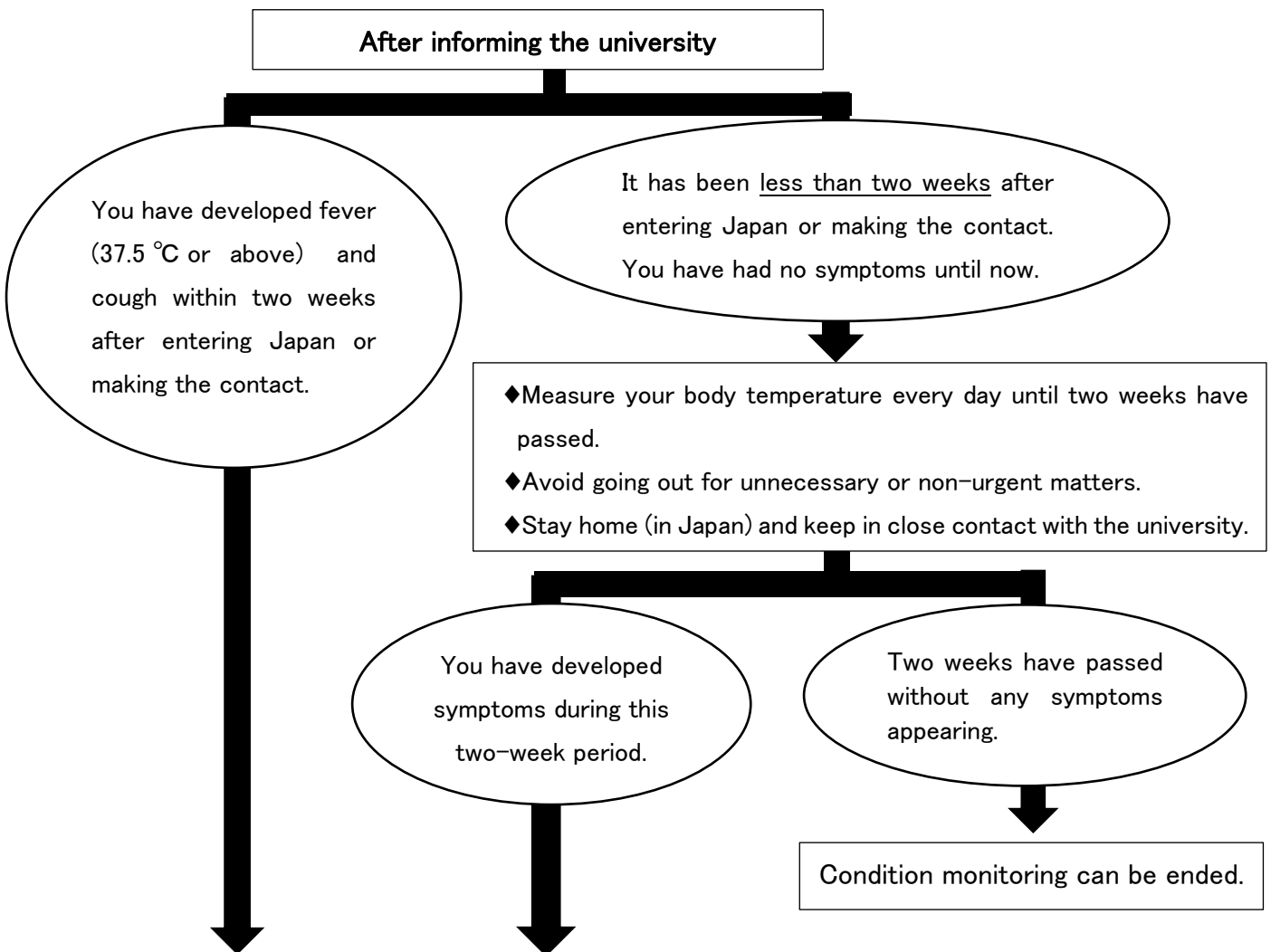


## To ALL students: 2<sup>nd</sup> Urgent Notification regarding the New Coronavirus

There has been an increasing number of people infected with the new coronavirus. In order to take countermeasures against the infection, please follow the instructions below if you meet any of the following conditions.

In February 2020 or after, if you either (A) entered or returned to Japan from China including Hong Kong and Macau, or (B) had (or may have had) contact with someone who resides in or returned from China's Hubei or Zhejiang Province, **please make sure to inform the university using the contact information below.**



1. Contact one of the following phone numbers. (Weekdays: 8:30–17:00)
  - ◆ 0575-24-9485 (Seki Campus Infirmary)
  - ◆ 0575-24-2214 (Seki Campus Student Affairs Office)
  - ◆ 058-375-3600 (Kakamigahara Campus Department of General Affairs)
2. Call a local public health center. Following their instructions, visit and consult a medical institution. (For further information, refer to your prefecture's website)
3. Follow the university's instructions as to whether or not you may attend school.